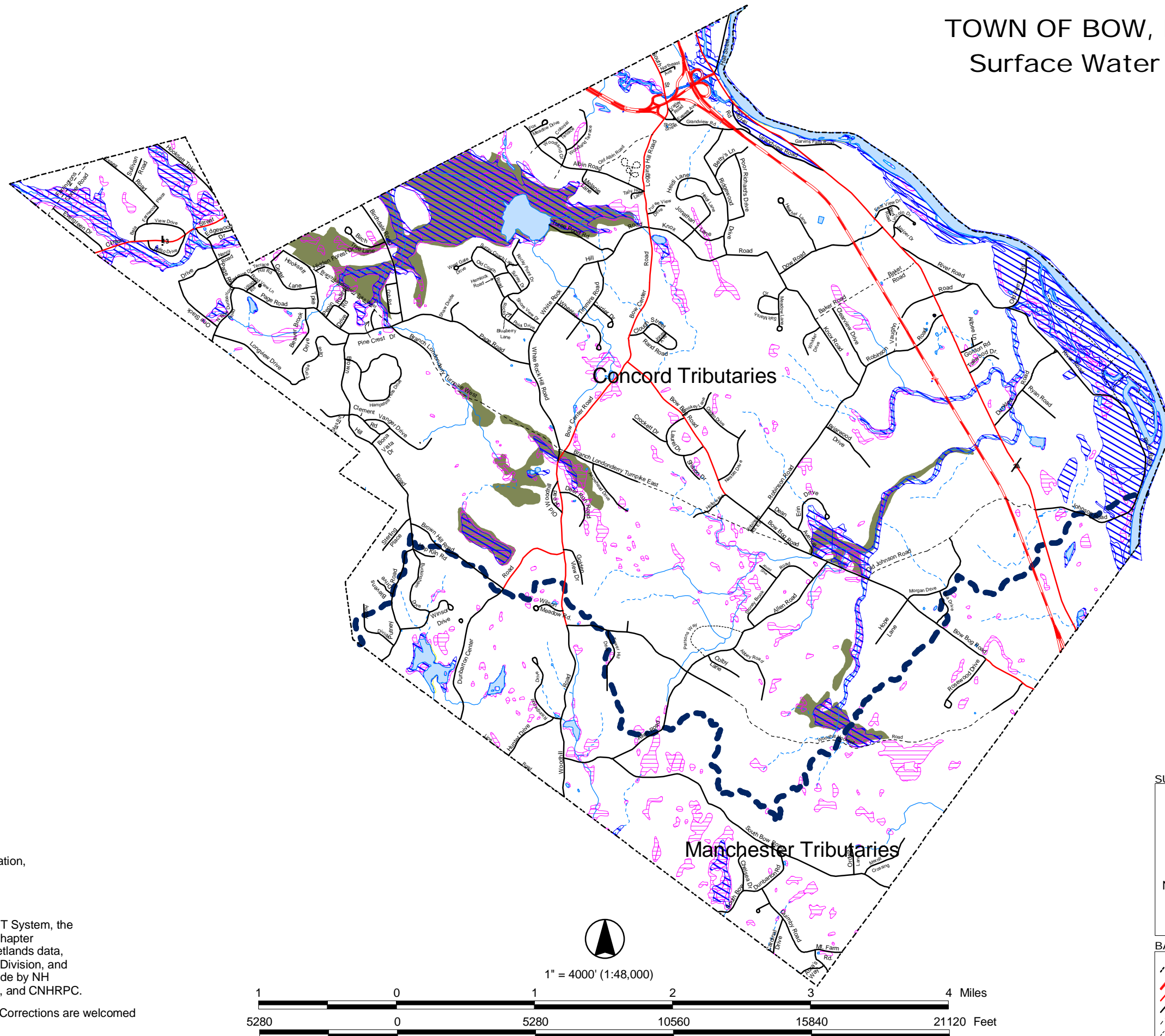


TOWN OF BOW, NEW HAMPSHIRE Surface Water Resources Map



This map produced by
**Central New Hampshire
 Regional Planning Commission**
 28 Commercial Street
 Concord, NH 03301

phone (603) 226-6020
 web www.cnhrpc.org



for the Bow Master Plan Conservation, Preservation,
 and Open Space Chapter, September 2004.

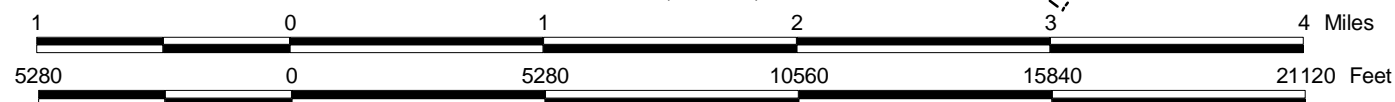
Data sources:

1:24,000 source scale data from the NH GRANIT System, the
 Conservation, Preservation, and Open Space Chapter
 Subcommittee, DES Wetlands Bureau prime wetlands data,
 the DES Well Protection and Water Resources Division, and
 the Town of Bow. Corrections to base data made by NH
 Department of Transportation, the Town of Bow, and CNHRPC.

This map intended for planning purposes only. Corrections are welcomed
 and should be directed to CNHRPC.



1" = 4000' (1:48,000)



SURFACE WATER RESOURCES LEGEND

- Watershed Boundary
- Rivers and Streams
- Intermittent Streams
- Water Bodies
- 100-year Floodplain
- Prime Wetlands
- National Wetlands Inventory**
- Palustrine Wetlands
- Lacustrine Wetlands
- Riverine Wetlands

BASE LEGEND

- Political Boundary
- Interstate Highways
- Class I & II Secondary State Highways
- Class V Town Maintained Roads
- Class VI Town Unmaintained Roads
- Other Roads (Private, Trails, etc)